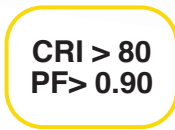
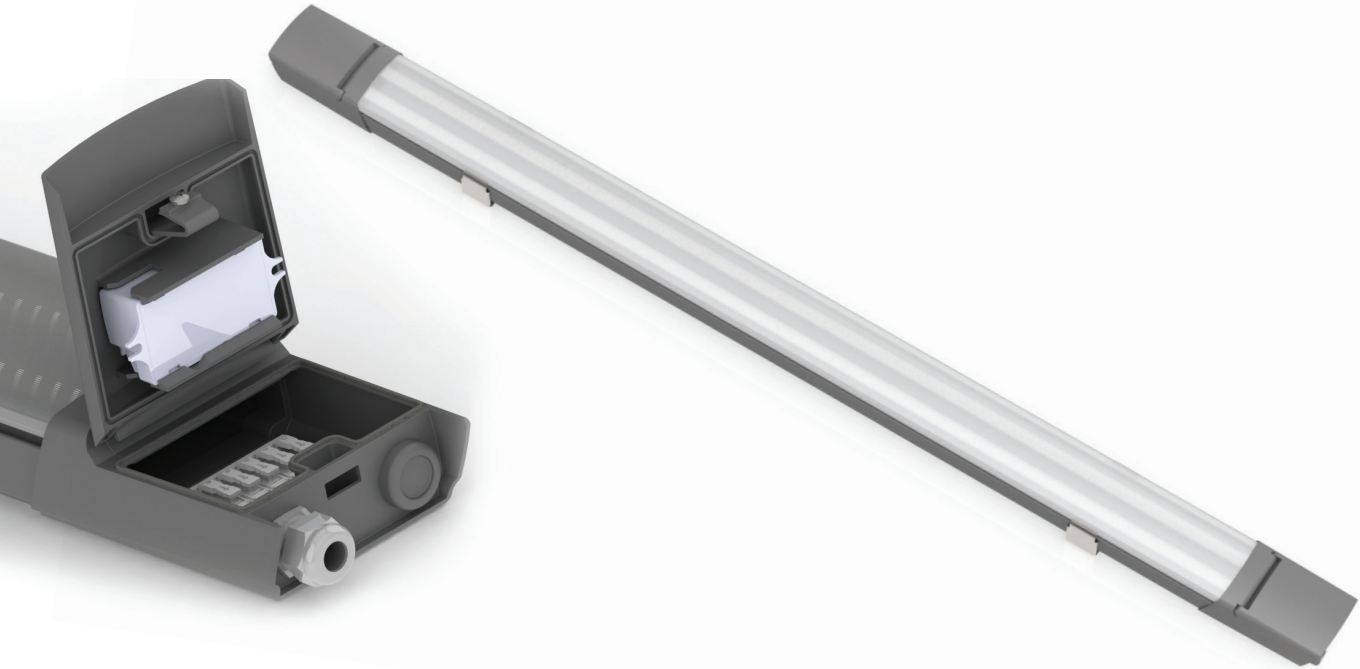




PROJECT NAME	
CATALOG NUMBER	
NOTES	
FIXTURE SCHEDULE	

LED LINEAR VAPOR TIGHT SERIES

The eLumigen LED Linear Vapor Tight fixtures are designed for installation at mounting heights of 18 feet (5.5 meters) or lower. These versatile and rugged fixtures have a high impact protection rating of IK10 and an IP66 rating. They are ideal for parking garages, loading docks, food processing plants and warehouses.



FEATURES & BENEFITS

- Extremely Durable Housing
- IK10 protection rating; withstands up to 11 lbs (5kg) impact
- IP66 dust/water ingress protection for Indoor/Outdoor applications
- Fast installation
- Flip-down cover, easy access through-wiring
- Easily Connect with daisy-chain sockets on both ends

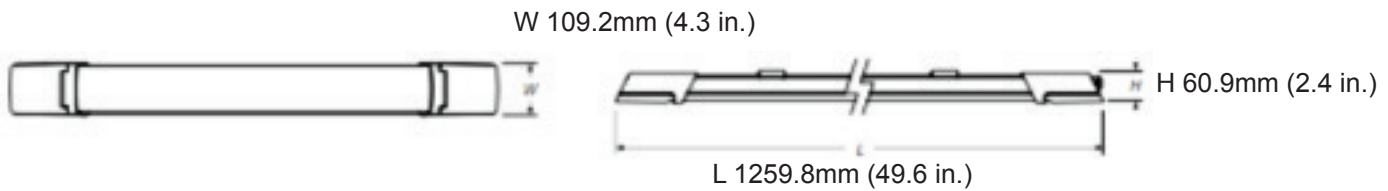
- Lightweight for easy installation
- Rigid diffuser with anti-yellowing technology
- Dimmable; 0-10V
- Thermal protection to prevent electrical shocks
- Low glare and wide beam angle for optimal illumination

APPLICATIONS

- Industrial
- Manufacturing
- Warehouses
- Food processing plants
- Parking garages

TECHNICAL SPECIFICATIONS

Wattage:	34W	Wattage:	50W
Voltage:	110 – 277V, 50/60 Hz	Voltage:	110 – 277V, 50/60 Hz
Power Factor:	0.9	Power Factor:	0.9
Dimmable:	0-10V dimming down to 25%	Dimmable:	0-10V dimming down to 25%
Light Output:	4800 lumens	Light Output:	6500 lumens
CCT:	4000K (Cool white)	CCT:	4000K (Cool white) 5000K (Daylight)
CRI:	80+	CRI:	80+
Lifetime:	50,000 hours (L70)	Lifetime:	50,000 hours (L70)
Dimensions:	1259.8mm / 49.6"(L) 109.2mm / 4.3"(W) 60.9mm / 2.4"(H)	Dimensions:	1259.8mm / 49.6"(L) 109.2mm / 4.3"(W) 60.9mm / 2.4"(H)
Temperature Range :	-25°C to 50°C -13°F to 122°F	Temperature Range :	-25°C to 50°C -13°F to 122°F



ORDERING INFORMATION

Model Number	Length	Lumen Output	Power (W)	CCT (K)	Efficiency (lm/W)	Dimmable	Input Voltage	CRI	Equivalent Watts	Case Pack	Unit Weight
HE4W34L4800C40DU-P	4 feet	4800	34W	4000	125	Yes	110V - 277V	80+	64W	2	5.3 lbs
HE4W50L6500C40DU-P	4 feet	6500	50W	4000	125	Yes	110V - 277V	80+	96W	2	5.3 lbs
HE4W50L6500C50DU-P	4 feet	6500	50W	5000	125	Yes	110V - 277V	80+	96W	2	5.3 lbs